

TRAY-DEC ACCESSORIES

END CAPS for Ultra Span-80 and Concrete Saver-60

The end caps are used to prevent leakage of concrete at the end of each steel deck section. The caps are self supporting and can be attached to the tray-dec section with rivets or screws. The lower edge of the end cap should not be trapped or contained by the steel deck section. End caps can be purchased at time of deck order.

EDGE FORMS

Edge forms need to be customised to suit the end purpose, the height needs to suit the finished slab depth and the return lip angle needs to coincide with the restraint strap supporting the edge form with respect to the steel deck.

If the steel deck overlaps the lower lip of the edge form, then the lower lip needs to extend over the full width of the supporting steel beam or intermediate wall.

If the edge form is part of a cantilever, then the fastening and the structural strength of the edge form needs to be considered.

HANGERS & REINFORCEMENT

The dovetail form along the centre of the steel deck and the joining edge provide the ideal attachment point to carry pipe work, ducting electrical trays and suspension points for ceiling systems. These same dovetails on the top of the steel deck section provide anchor points for longitudinal reinforcing standoffs.

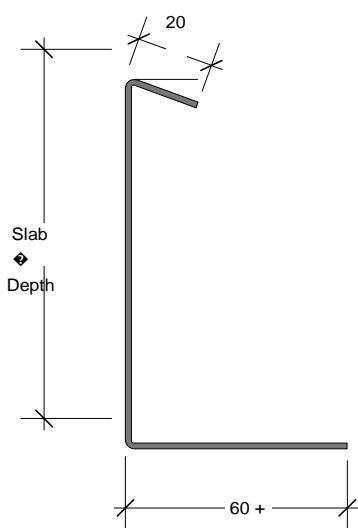
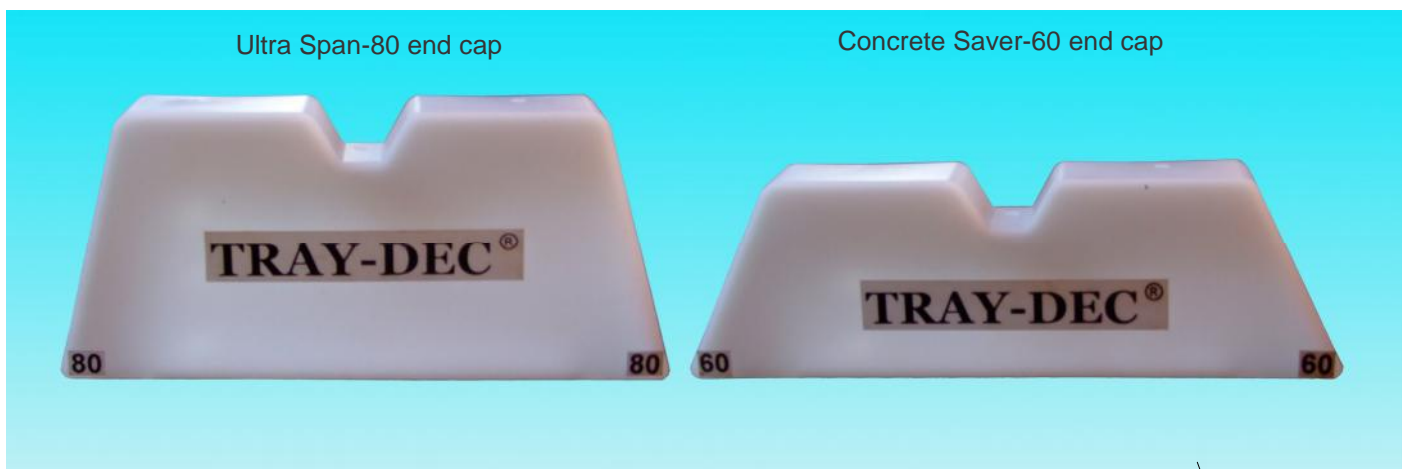
RESTRAINT STRAPS

Restraint straps are used to connect the edge forms to the steel deck.

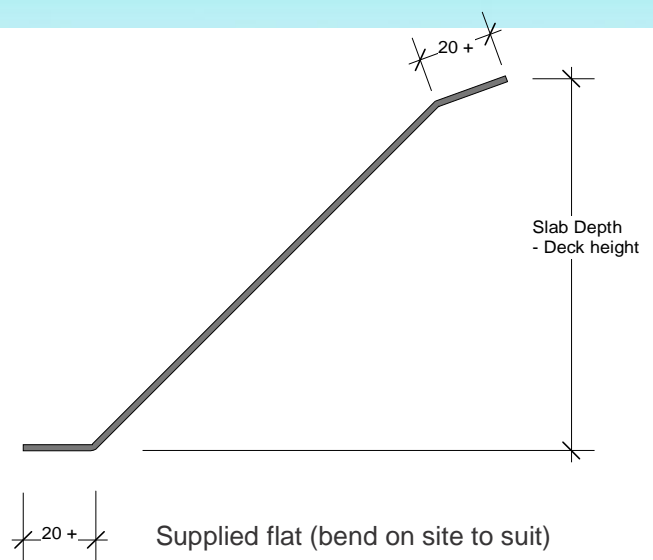
The length and formed angle on the restraint strap is dependant on the depth of the slab and the position of the steel deck. The restraint straps are normally spaced at 600 mm centre's. Restraint straps are normally attached to the edge forms and steel deck with rivets or screws.

FIRE DESIGN

All Tray dec composite slabs provide at least a 30/30/30 fire rating. Fire design for rating in excess of this is carried out in accordance with NZS 3101;2006 or BS 5950-8:2003



EDGE FORM



RESTRAINT STRAP

